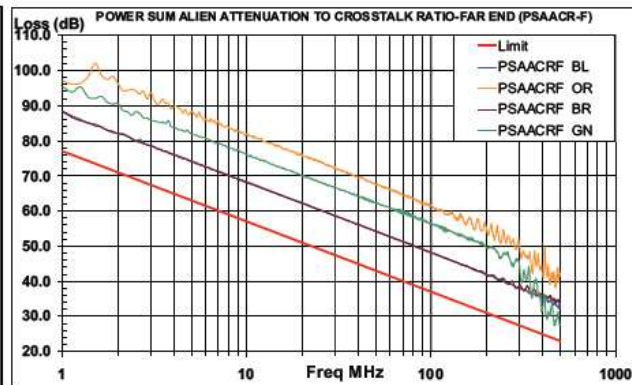
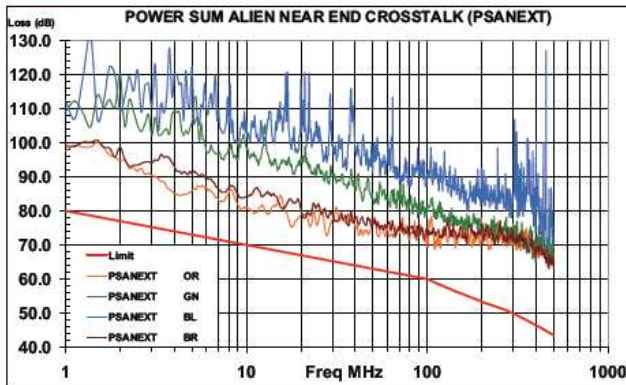




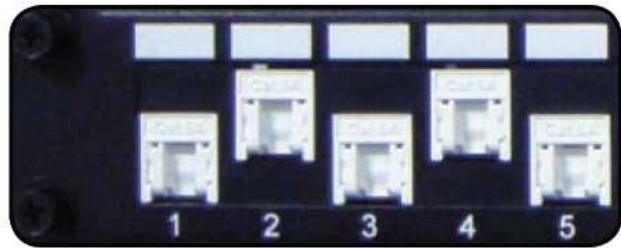
**1** Staggered mechanism optimizes **PSANEXT** & **PSAACR-F** (Alien crosstalk).



**2** **Rigid rear cable manager** ensures **necessary strain relief** so the cable stress results from a tight bend radius directly behind the IDC termination can be minimized.



**3** **Optional shuttered design** protects the unused ports from dust and insect.



## Application

### Cat.6A Channel Performance

It's press-fit made. No solder is used, purely lead-free.

Interoperable with current Gigabit Ethernet system and backward compatible to the former Category application, as the table shown hereunder:

Category 3	Category 4	Category 5	Category 5e	Category 6	Category 6A
802.3 - 10BASE-T	802.5 - 4Mbps Token Ring, 802.5 - 16Mbps Token Ring	155 Mbps ATM, 1000BASE-T	155 Mbps ATM, 1000BASE-T, VoIP	1000 BASE-TX	10G BASE-TX

Rear cable management allow you to neatly route your bulk cable.  
Compatible to 110 impact tool or KRONE insert tool.

## Physical Specification

**PANEL : SPCC BLACK POWDER PAINTING COAT FINISH**

**PLASTIC FRAME : ABS HIGH-IMPACT UL94V-0 THERMOPLASTIC**

**KEystone JACK HOUSING : ABS HIGH-IMPACT UL94V-0 THERMOPLASTIC**

**SPRING WIRE : PHOSPHOR BRONZE 5100W TEMPER WIRE ,  $\varphi=0.45\text{MM}$ , 50U" GOLD OVER 100U" NICKEL**

**IDC PLASTIC : POLYCARBONATE RESIN HIGH-IMPACT UL94V-0 THERMOPLASTIC**

**IDC CONTACT : PHOSPHOR BRONZE C5191R-H, T=0.4MM, 200U" TIN OVER 50U" NICKEL UNDERCOAT**

**WIRE MANAGEMENT HOLDER : NYLON PA-66 UL94V-0 THERMOPLASTIC, 25% GLASS FIBER FILLED**

**WIRE MANAGEMENT HANGER : SECC WITH ZINC UNDERCOAT, BLACK POWDER PAINTING FINISH**

**IDC CAP : ABS HIGH-IMPACT UL94V-0 THERMOPLASTIC**

**MATING : 750 MATING CYCLES WITH FCC COMPLIANT RJ-45 PLUG**

**CONTACT FORCE : 100 GRAMS WITH FCC COMPLIANT RJ-45 PLUG**

**PLUG RETENTION FORCE : 11 LBF MIN.**

**DURABILITY : 200 TERMINATION CYCLES.**

**CONTACT COMPATIBILITY : ACCOMMODATES 22 TO 26 AWG SOLID / 24 AWG STRANDED**

**OPERATING TEMPERATURE : -10~60°C**

**OPERATING HUMIDITY : 10%~90%RH**

**STORAGE TEMPERATURE : -40°C to 68°C**

# Electrical Specification

INSULATION RESISTANCE : 500MΩ  
 CURRENT RATING : 1.5Amps  
 CONTACT RESISTANCE : 20mΩ

DIELECTRIC WITHSTANDING VOLTAGE: 1000V AC  
 DC RESISTANCE : 0.1Ω

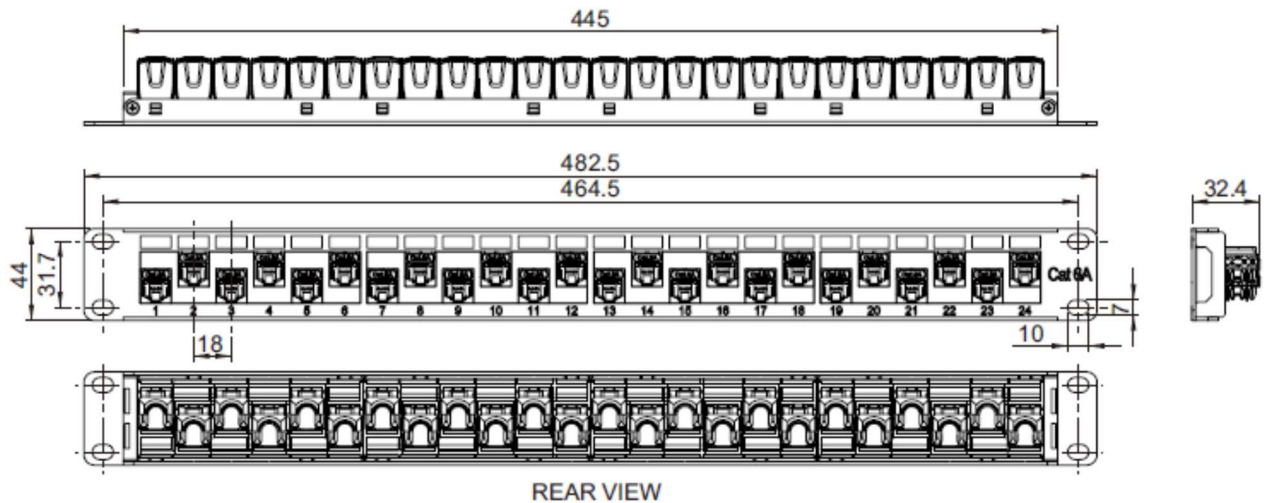
# Standard Verification

ANSI/TIA-568-C.2 Cat.6A channel compliant  
 ISO/IEC 11801 Class EA channel compliant  
 ISO/IEC 60603-7 compliant

FCC part 68, Subpart F compliant  
 UL 1863  
 RoHS directive 2002/95/EC compliant

# Mechanical Drawing

(Unit:mm)



**Enclosure:**

nylon cable tie x 24pcs, wire management X 1 pc,

wire management hanger (L) x 1 pc, wire management hanger (R) x 1 pc

